



## DNR Lands Information<sup>1</sup>

# Lake of the Woods County

State of Minnesota, Department of Natural Resources, Northwest Regional Operations

Dec-08

### Area within County Boundary

Size of County (including water bodies) <sup>2</sup>	856,621 acres
Size of County (excluding water bodies) <sup>3</sup>	834,731 acres
DNR administered lands (excluding water bodies)	486,197 acres
Percentage of DNR administered lands in County	58%
County Tax Forfeit lands	1,345 acres
Percentage of Tax Forfeit lands in County	<1%

### DNR Administered Land by Administrator<sup>4</sup>:

Land Administrator:	Acreage:	
DEPT OF NATURAL RESOURCES	48,735	<1%
ECO SERVICES DIVISION	13,288	<1%
FORESTRY DIVISION	284,635	59%
PARKS & RECREATION DIV	3,541	<1%
TRAILS & WATERWAYS UNIT	8	<1%
WILDLIFE SECTION	135,989	28%
<b>TOTAL:</b>	<b>486,197</b>	

### DNR Administered Land by Land Type:

Land Type:	Acreage:	
ACQUIRED	13,153	3%
CONSOLIDATED CONS AREA	417,614	86%
FEDERAL: STATE LEASE	49,208	10%
TRUST FUND: IND SCHOOL	4,076	1%
TRUST FUND: SCHOOL	280	<1%
TRUST FUND: SWAMP	280	<1%
VOLSTEAD	1,587	<1%
<b>TOTAL:</b>	<b>486,197</b>	

### DNR Management Units<sup>5</sup>:

Type of Unit:	# of Units:
SFT (State Forest)	3
SNA (Scientific & Natural Area)	5
SPK (State Park)	1
SRA (State Recreation Area)	1
WAS (Water Access Site)	2
WMA (Wildlife Management Area)	14
<b>TOTAL:</b>	<b>26</b>

### Leases/easements on DNR Managed Lands:

Type of Lease:	# of Contracts:
AGRICULTURAL LEASE	6
CABIN SITE: HUNTING	8
EASEMENT: COUNTY	30
EASEMENT: MN/DOT	2
EASEMENT: PRIVATE	1
GRANT-IN-AID PERMIT	1
GRAVEL LEASE	7
MISCELLANEOUS LEASE	5
<b>TOTAL:</b>	<b>60</b>

### DNR Land Sales/Acquisitions/Exchanges completed in FY 08<sup>6</sup>:

Type of Transaction	# of Transactions:
Acquisitions	0
Sales	0
Exchanges	0

### Annual Payment In Lieu of Taxes to County<sup>7</sup>

FY07 PILT Payment paid in July 2008 -	<b>\$957,451</b>
---------------------------------------	------------------

<sup>1</sup> Disclaimer: Data used in this report was obtained from DNR Land Records as of 9/18/08 and may contain errors. The information within this document is subject to change. Additional data is available on page 2 of this informational sheet.

<sup>2</sup> Size of County (including water bodies) is the total of all PLS40 (a GIS data layer created by MN DNR) polygons that comprise the county. This value does not include some of the major water bodies of the state, including Lake of The Woods, approx. 1/2 of Mille Lacs Lake, and Lake Winnibigoshish. This was calculated for this project as no resource for standardized county acreages is available.

<sup>3</sup> Size of County (excluding water bodies) is the Size of County (including water bodies) with meandered water bodies subtracted.

<sup>4</sup> DNR Administered Lands Acreage is based on the Public Use Administrator.

<sup>5</sup> DNR Management Units may be wholly or partially within the County and are only indicated for Units with state owned land (see page 2 for unit names). Some management units listed as FMAs are in the process of being re-designated as AMAs.

<sup>6</sup> Completed Sales/Acquisitions/Exchanges for Fiscal Year 2008 are those completed between 7/1/07 to 6/30/08. See page 2 for additional information.

<sup>7</sup> PILT Payments are paid annually. The PILT Payment is paid on DNR Acquired, Trust, Consolidated Conservation, and Federal Lease (LUP) type lands as well as County Tax Forfeit Lands. The current rates per acre for PILT payments are: Acquired - 3/4 of 1% of appraised value or \$4.810, Tax Forfeit - \$1.203 and DNR Other - \$0.601.



# Lake of the Woods County

## DNR Lands Information<sup>1</sup>

State of Minnesota, Department of Natural Resources, Northwest Regional Operations

Dec-08

### DNR Management Units<sup>2</sup>:

#### 3 SFT (State Forest)

BELTRAMI ISLAND  
LAKE OF THE WOODS  
NORTHWEST ANGLE

#### 5 SNA (Scientific & Natural Area)

MULLIGAN LAKE  
NORRIS CAMP  
PINE/CURRY ISLAND  
RED LAKE  
WINTER ROAD LAKE

#### 1 SPK (State Park)

ZIPPEL BAY

#### 1 SRA (State Recreation Area)

GARDEN ISLAND

#### 2 WAS (Water Access Site)

RAINY RIVER  
ROCKY POINT

#### 14 WMA (Wildlife Management Area)

ANGLE ISLANDS  
CARP SWAMP  
FOUR MILE BAY  
GRACETON  
LARRY BERNHOFT  
NORTH  
PROSPER  
RAKO SLOUGH  
RAPID RIVER  
RED LAKE  
ROCKY POINT  
SILVER CREEK  
SOUTH SHORE  
SPOONER

### DNR Sales in 2008<sup>3</sup>:

None

### DNR Acquisitions in 2008<sup>3</sup>:

None

### DNR Easement Interest in County (flowage/conservation)

7.00 ACRES

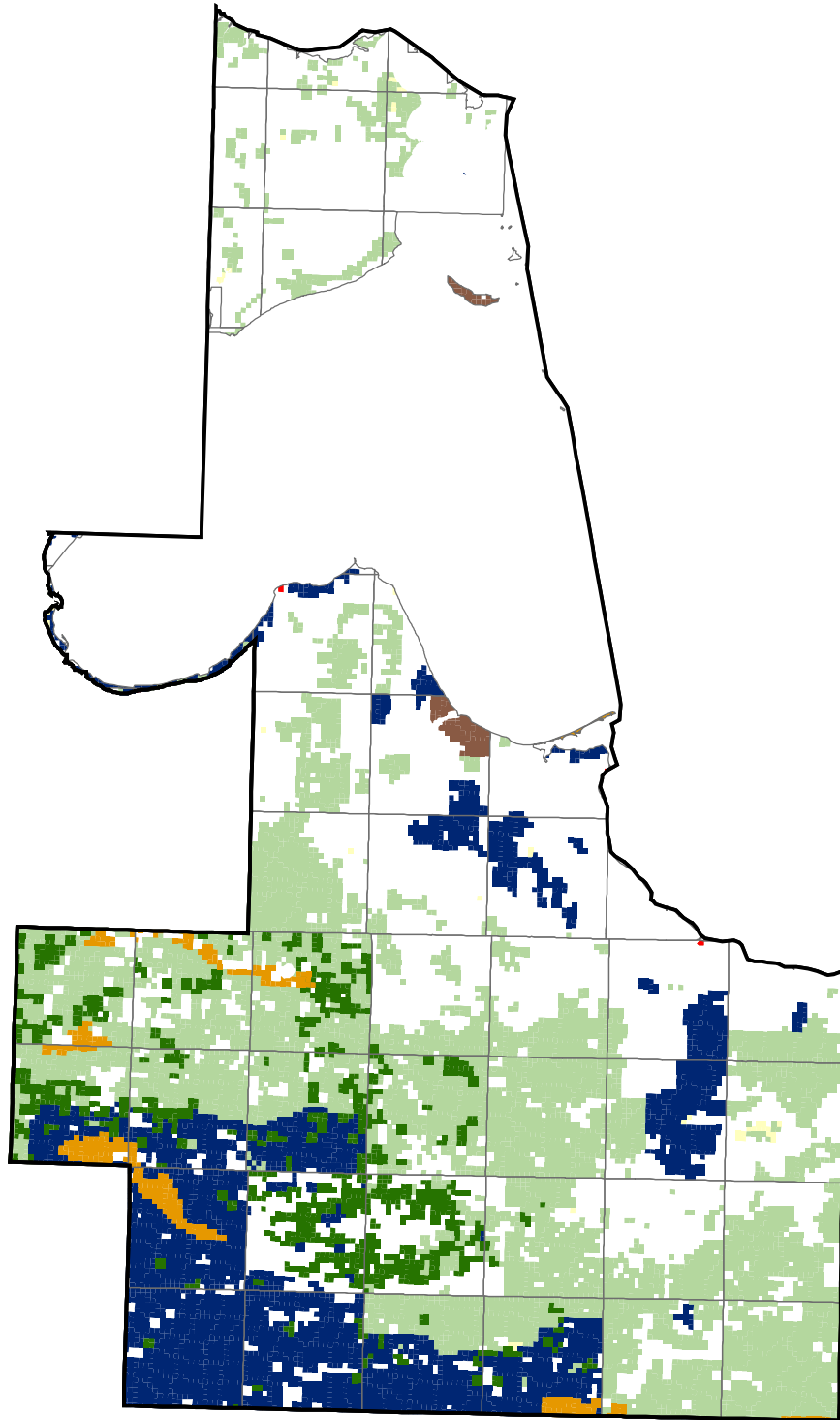
<sup>1</sup> Disclaimer: Data used in this report was obtained from DNR Land Records as of 9/18/08 and may contain errors. The information within this document is subject to change.

<sup>2</sup> DNR Management Units may be wholly or partially within the County and are only indicated for Units with state owned land.

<sup>3</sup> Transaction data is derived from DNR Land Records as of 10/5/08. Completed Sales/Acquisitions/Exchanges for Fiscal Year 2008 are those completed between 7/1/07 to 6/30/08.

# STATE LANDS ADMINISTERED BY DNR AND THE COUNTY

## LAKE OF THE WOODS COUNTY, MINNESOTA

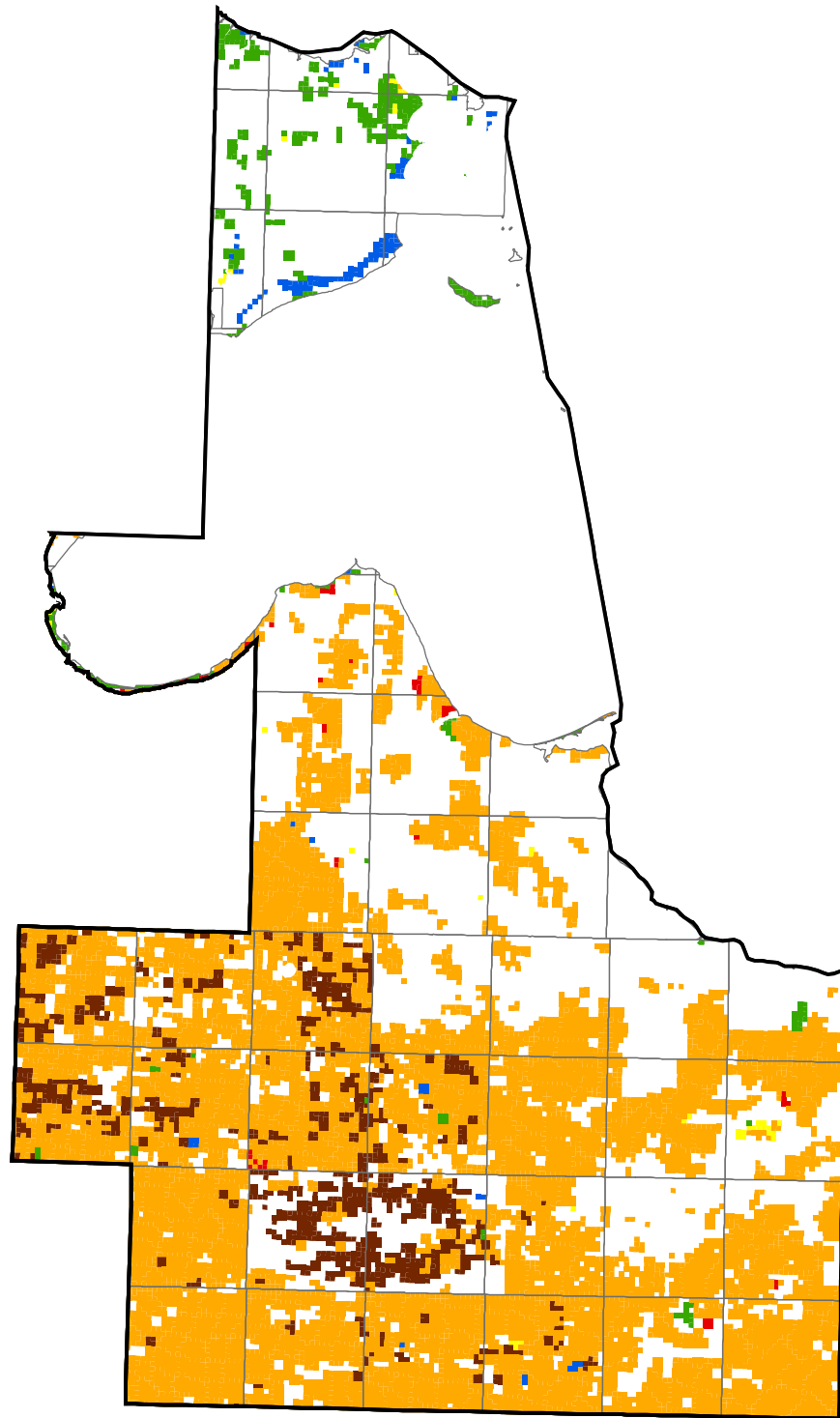


### State Lands by Administrator\*









\*State lands from the DNR Land Records, October 2008.  
The lands are mapped to the forty/government lot of the public land survey, so some of the lands may be less than the entire forty or government lot.

# STATE LANDS ADMINISTERED BY DNR AND THE COUNTY LAKE OF THE WOODS COUNTY, MINNESOTA



## State Lands by Land Type\*

\*State lands from the DNR Land Records, October 2008.  
The lands are mapped to the forty/government lot of the public land survey, so some of the lands may be less than the entire forty or government lot.

	Trust Lands		Tax Forfeited Lands
	Acquired Lands		Volstead Lands
	Consolidated Conservation		Federal Lease Lands