



## DNR Lands Information<sup>1</sup>

# Lake County

State of Minnesota, Department of Natural Resources, Northeast Regional Operations

Dec-08

### Area within County Boundary

Size of County (including water bodies) <sup>2</sup>	1,454,204 acres
Size of County (excluding water bodies) <sup>3</sup>	1,363,104 acres
DNR administered lands (excluding water bodies)	190,176 acres
Percentage of DNR administered lands in County	14%
County Tax Forfeit lands	150,974 acres
Percentage of Tax Forfeit lands in County	11%

### DNR Administered Land by Administrator<sup>4</sup>:

Land Administrator:	Acreage:	
DEPT OF NATURAL RESOURCES	261	<1%
ECO SERVICES DIVISION	5,258	3%
FISHERIES SECTION	8,088	4%
FORESTRY DIVISION	157,007	83%
LANDS & MINERALS	8	<1%
PARKS & RECREATION DIV	18,408	10%
TRAILS & WATERWAYS UNIT	547	<1%
WATERS DIVISION	0.02	<1%
WILDLIFE SECTION	600	<1%
<b>TOTAL:</b>	<b>190,176</b>	

### DNR Administered Land by Land Type:

Land Type:	Acreage:	
ACQUIRED	30,510	16%
TRUST FUND: IND SCHOOL	28,712	15%
TRUST FUND: SCHOOL	53,097	28%
TRUST FUND: SWAMP	77,442	41%
TRUST FUND: UNIVERSITY	415	<1%
<b>TOTAL:</b>	<b>190,176</b>	

### DNR Management Units<sup>5</sup>:

Type of Unit:	# of Units:
FMA (Fish Management Area)	9
SFT (State Forest)	4
SNA (Scientific & Natural Area)	1
SPK (State Park)	4
SWS (State Wayside)	2
TRA (State Trails)	2
WAS (Water Access Site)	5
WMA (Wildlife Management Area)	2
<b>TOTAL:</b>	<b>29</b>

### Leases/easements on DNR Managed Lands:

Type of Lease:	# of Leases:
EASEMENT: COUNTY	26
EASEMENT: MN/DOT	2
EASEMENT: PRIVATE	5
EASEMENT: SUPERIOR N.F.	25
EASEMENT: TOWNSHIP	8
EASEMENT: U S FOREST SERV	3
GRANT-IN-AID PERMIT	11
GRAVEL LEASE	3
INTERAGY AGR:MNDOT TOWERS	2
MISCELLANEOUS LEASE	31
RES. MGMT. ACCESS PERMIT	4
<b>TOTAL:</b>	<b>120</b>

### DNR Land Sales/Acquisitions/Exchanges completed in FY 08<sup>6</sup>:

Type of Transaction	# of Transactions:
Acquisitions	4
Sales	0
Exchanges	0

### Annual Payment In Lieu of Taxes to County<sup>7</sup>

FY07 PILT Payment paid in July 2008 - **\$548,812**

<sup>1</sup> Disclaimer: Data used in this report was obtained from DNR Land Records as of 9/18/08 and may contain errors. The information within this document is subject to change. Additional data is available on page 2 of this informational sheet.

<sup>2</sup> Size of County (including water bodies) is the total of all PLS40 (a GIS data layer created by MN DNR) polygons that comprise the county. This value does not include some of the major water bodies of the state, including Lake of The Woods, approx. 1/2 of Mille Lacs Lake, and Lake Winnibigoshish. This was calculated for this project as no resource for standardized county acreages is available.

<sup>3</sup> Size of County (excluding water bodies) is the Size of County (including water bodies) with meandered water bodies subtracted.

<sup>4</sup> DNR Administered Lands Acreage is based on the Public Use Administrator.

<sup>5</sup> DNR Management Units may be wholly or partially within the County and are only indicated for Units with state owned land (see page 2 for unit names). Some management units listed as FMAs are in the process of being re-designated as AMAs.

<sup>6</sup> Completed Sales/Acquisitions/Exchanges for Fiscal Year 2008 are those completed between 7/1/07 to 6/30/08. See page 2 for additional information.



## DNR Lands Information<sup>1</sup>

# Lake County

State of Minnesota, Department of Natural Resources, Northeast Regional Operations

Dec-08

### DNR Management Units<sup>2</sup>:

#### 9 FMA (Fish Management Area)

BAPTISM & W.BR.BAPTISM R.  
BENSON LAKE  
GENERAL  
GOOSEBERRY RIVER  
KNIFE RIVER  
MINK CREEK  
SILVER CREEK  
STEWART & L. STEWART RIV  
TWIN LAKE

#### 4 SFT (State Forest)

BEAR ISLAND  
FINLAND  
INSULA LAKE  
LAKE ISABELLA

#### 1 SNA (Scientific & Natural Area)

SAND LAKE PEATLAND

### DNR Sales in 2008<sup>3</sup>:

NONE

### DNR Acquisitions in 2008<sup>3</sup>:

13913 - FINLAND SFT  
13969 - FINLAND SFT  
14039 - FINLAND SFT  
13824 - GEORGE H. CROSBY-MANITOU SPK

### DNR Easement Interest in County (flowage/conservation)

148.33 ACRES

#### 4 SPK (State Park)

GEORGE H. CROSBY-MANITOU  
GOOSEBERRY FALLS  
SPLIT ROCK LIGHTHOUSE  
TETTEGOUCHE

#### 2 SWS (State Wayside)

CARIBOU FALLS  
FLOOD BAY

#### 2 TRA (State Trails)

GITCHI GAMI  
NORTH SHORE

#### 5 WAS (Water Access Site)

KNIFE RIVER  
LAKE SUPERIOR  
LAX LAKE  
SNOWBANK LAKE  
WHITE IRON LAKE

#### 2 WMA (Wildlife Management Area)

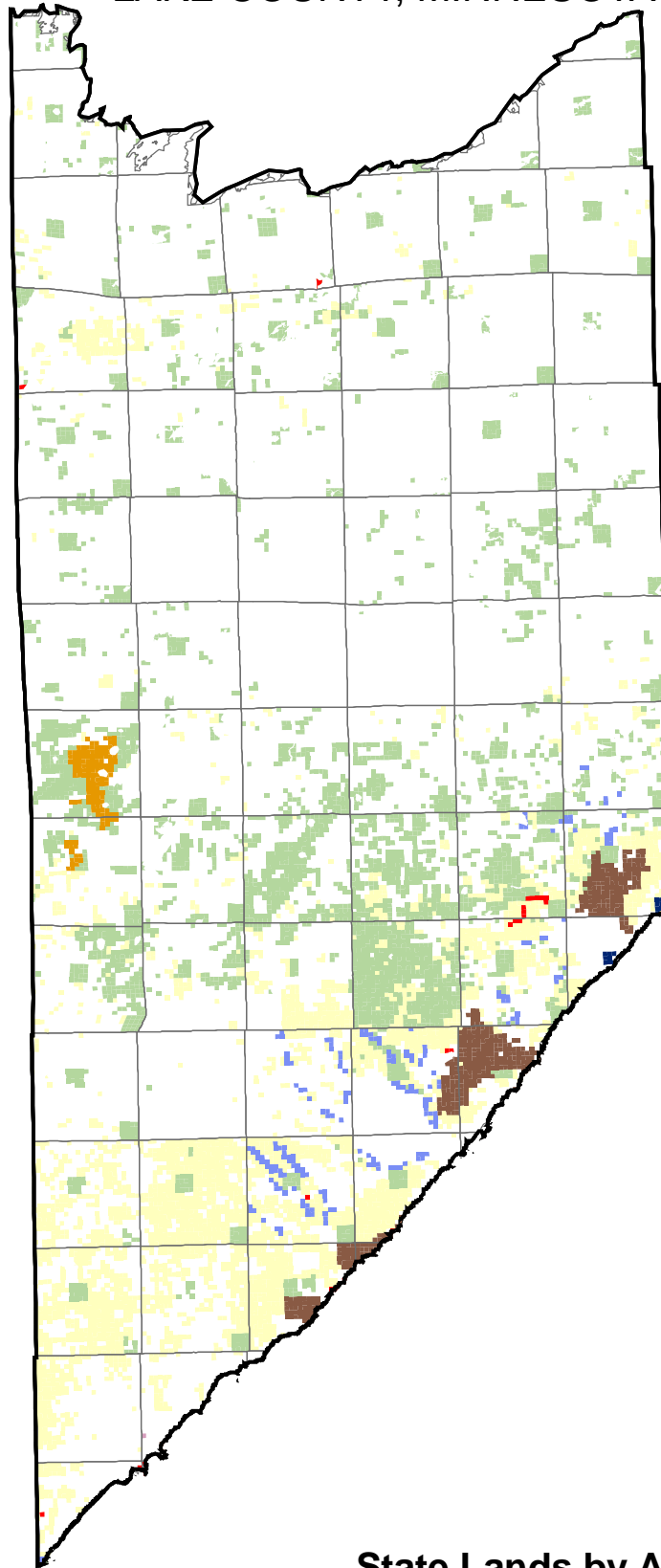
CARIBOU FALLS  
LITTLE MARAIS

<sup>1</sup> Disclaimer: Data used in this report was obtained from DNR Land Records as of 9/18/08 and may contain errors. The information within this document is subject to change.

<sup>2</sup> DNR Management Units may be wholly or partially within the County and are only indicated for Units with state owned land.

<sup>3</sup> Transaction data is derived from DNR Land Records as of 10/5/08. Completed Sales/Acquisitions/Exchanges for Fiscal Year 2008 are those completed between 7/1/07 to 6/30/08.

# STATE LANDS ADMINISTERED BY DNR AND THE COUNTY LAKE COUNTY, MINNESOTA

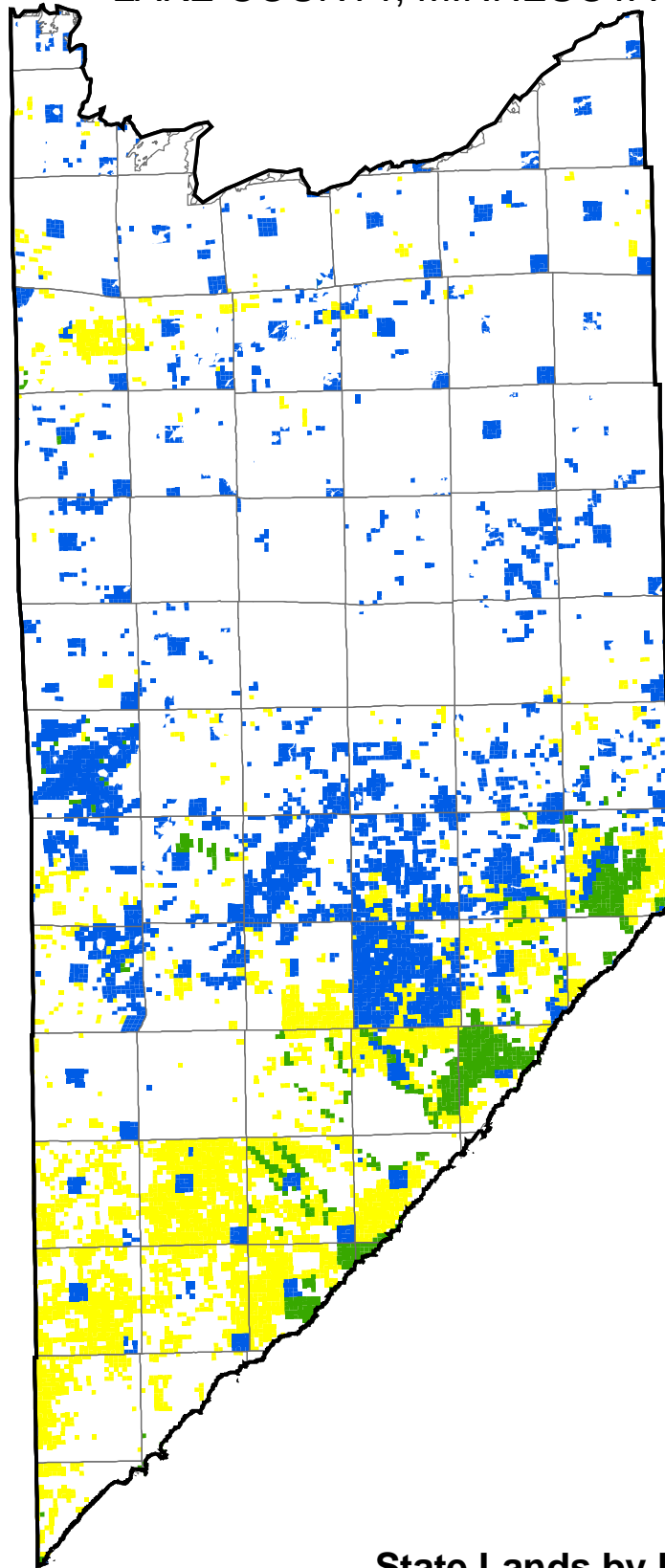


## State Lands by Administrator\*

- |  |   |  |
|--|---|--|
|  Ecological Resources |  Fisheries |  Wildlife |
|  Federal Lease Lands  |  Other DNR |  Forestry |
|  Trails and Waterways |  Parks     |  County   |






\*State lands from the DNR Land Records, October 2008.  
The lands are mapped to the forty/government lot of the public land survey, so some of the lands may be less than the entire forty or government lot.

# STATE LANDS ADMINISTERED BY DNR AND THE COUNTY LAKE COUNTY, MINNESOTA



**State Lands by Land Type\***

\*State lands from the DNR Land Records, October 2008.  
The lands are mapped to the forty/government lot of the public land survey, so some of the lands may be less than the entire forty or government lot.

- |   |                           |   |                     |
|---|---------------------------|---|---------------------|
|  | Trust Lands               |  | Tax Forfeited Lands |
|  | Acquired Lands            |  | Volstead Lands      |
|  | Consolidated Conservation |  | Federal Lease Lands |