



## DNR Lands Information<sup>1</sup>

# Aitkin County

State of Minnesota, Department of Natural Resources, Northeast Regional Operations

Dec-08

### Area within County Boundary

Size of County (including water bodies) <sup>2</sup>	1,213,565 acres
Size of County (excluding water bodies) <sup>3</sup>	1,166,318 acres
DNR administered lands (excluding water bodies)	394,378 acres
Percentage of DNR administered lands in County	34%
County Tax Forfeit lands	222,166 acres
Percentage of Tax Forfeit lands in County	19%

### DNR Administered Land by Administrator<sup>4</sup>:

Land Administrator:	Acreage:	
DEPT OF NATURAL RESOURCES	9	<1%
ECO SERVICES DIVISION	411	<1%
FISHERIES SECTION	630	<1%
FORESTRY DIVISION	337,586	86%
PARKS & RECREATION DIV	14,632	4%
TRAILS & WATERWAYS UNIT	86	<1%
WILDLIFE SECTION	41,023	10%
<b>TOTAL:</b>	<b>394,378</b>	

### DNR Administered Land by Land Type:

Land Type:	Acreage:	
ACQUIRED	21,371	5%
CONSOLIDATED CONS AREA	237,197	60%
TRUST FUND: IND SCHOOL	11,928	3%
TRUST FUND: SCHOOL	41,538	11%
TRUST FUND: SWAMP	81,383	21%
TRUST FUND: UNIVERSITY	290	<1%
VOLSTEAD	670	<1%
<b>TOTAL:</b>	<b>394,378</b>	

### DNR Management Units<sup>5</sup>:

Type of Unit:	# of Units:
AMA (Aquatic Management Area)	5
CBR (Canoe & Boating Route)	2
FMA (Fish Management Area)	8
SFT (State Forest)	5
SNA (Scientific & Natural Area)	1
SPK (State Park)	1
WAS (Water Access Site)	27
WMA (Wildlife Management Area)	26
<b>TOTAL:</b>	<b>75</b>

### Leases/easements on DNR Managed Lands:

Type of Lease:	# of contracts
AGRICULTURAL LEASE	2
COOP FARM AGRMNT: PRIVATE	6
EASEMENT: COUNTY	36
EASEMENT: MN/DOT	3
EASEMENT: OTHER ST AGENCY	2
EASEMENT: PRIVATE	2
EASEMENT: TOWNSHIP	30
EMPLOYEE RESIDENTIAL LEA.	2
GRANT-IN-AID PERMIT	1
GRAVEL LEASE	4
INTERAGY AGR:MNDOT TOWERS	2
MISCELLANEOUS LEASE	24
<b>TOTAL:</b>	<b>114</b>

### DNR Land Sales/Acquisitions/Exchanges completed in FY 08<sup>6</sup>:

Type of Transaction	# of Transactions:
Acquisitions	1
Sales	1
Exchanges	0

### Annual Payment In Lieu of Taxes to County<sup>7</sup>

FY07 PILT Payment paid in July 2008 - **\$749,705**

<sup>1</sup> Disclaimer: Data used in this report was obtained from DNR Land Records as of 9/18/08 and may contain errors. The information within this document is subject to change. Additional data is available on page 2 of this informational sheet.

<sup>2</sup> Size of County (including water bodies) is the total of all PLS40 (a GIS data layer created by MN DNR) polygons that comprise the county. This value does not include some of the major water bodies of the state, including Lake of The Woods, approx. 1/2 of Mille Lacs Lake, and Lake Winnibigoshish. This was calculated for this project as no resource for standardized county acreages is available.

<sup>3</sup> Size of County (excluding water bodies) is the Size of County (including water bodies) with meandered water bodies subtracted.

<sup>4</sup> DNR Administered Lands Acreage is based on the Public Use Administrator.

<sup>5</sup> DNR Management Units may be wholly or partially within the County and are only indicated for Units with state owned land (see page 2 for unit names). Some management units listed as FMAs are in the process of being re-designated as AMAs.

<sup>6</sup> Completed Sales/Acquisitions/Exchanges for Fiscal Year 2008 are those completed between 7/1/07 to 6/30/08. See page 2 for additional information.

<sup>7</sup> PILT Payments are paid annually. The PILT Payment is paid on DNR Acquired, Trust, Consolidated Conservation, and Federal Lease (LUP) type lands as well as County Tax Forfeit



# DNR Lands Information<sup>1</sup>

# Aitkin County

State of Minnesota, Department of Natural Resources, Northeast Regional Operations

Dec-08

## DNR Management Units<sup>2</sup>:

### 5 AMA (Aquatic Management Area)

BIG SANDY LAKE  
CEDAR LAKE  
FLOWAGE LAKE  
GLACIER LAKE  
NORD LAKE

### 2 CBR (Canoe & Boating Route)

MISSISSIPPI RIVER  
SNAKE RIVER

### 8 FMA (Fish Management Area)

BIG PINE  
HANSEN LAKE  
LONG LAKE CREEK  
MILLE LACS LAKE  
MORRISON BROOK  
MUD RIVER  
RIPPLE (MUD) LAKE  
SPIRIT LAKE

### 5 SFT (State Forest)

HILL RIVER  
SAVANNA  
SOLANA  
WAUKENABO  
WEALTHWOOD

### 1 SNA (Scientific & Natural Area)

MCGREGOR MARSH

### 1 SPK (State Park)

SAVANNA PORTAGE

### 27 WAS (Water Access Site)

BALL BLUFF LAKE  
BLUE LAKE  
DAM LAKE  
ELM ISLAND LAKE  
ESQUAGAMAH LAKE  
FARM ISLAND LAKE  
FLEMING LAKE  
FRENCH LAKE  
GUN LAKE  
HAMMAL LAKE  
HANGING KETTLE LAKE  
HANSEN LAKE  
LONE LAKE  
LONG LAKE  
MILLE LACS LAKE  
MINNEWAWA LAKE  
NORD LAKE  
PINE LAKE  
PORTAGE LAKE  
RICE LAKE  
RIPPLE LAKE  
ROUND LAKE  
SECTION 12 LAKE  
SISSABAGAMAH LAKE  
SPIRIT LAKE  
SUGAR LAKE  
WLADIMIRAF LAKE

### 26 WMA (Wildlife Management Area)

AITKIN  
CEDAR LAKE  
DEVIL'S DREAM  
FARM ISLAND  
FRENCH LAKE  
GRAYLING MARSH  
HAYPOINT  
HILL LAKE  
KIMBERLY MARSH  
LAWLER  
LITTLE WILLOW  
MCGREGOR  
MOOSE WILLOW  
NEWSTROM  
PLINY  
RIPPLE RIVER  
ROBERTS/WICKSTROM  
SALO MARSH  
SANDY LAKE RESERVOIR  
SPANNAUS  
SWAMP LAKE  
VENDLA BADGER  
WASHBURN MARSH  
WILLOWSIPPI  
WOLD  
WOROSS

## DNR Acquisitions in 2008<sup>3</sup>:

13634 - Glacier Lake AMA

## DNR Sales in 2008<sup>3</sup>

1239 - Rossburg Trust

## DNR Easement Interest in County (flowage/conservation)

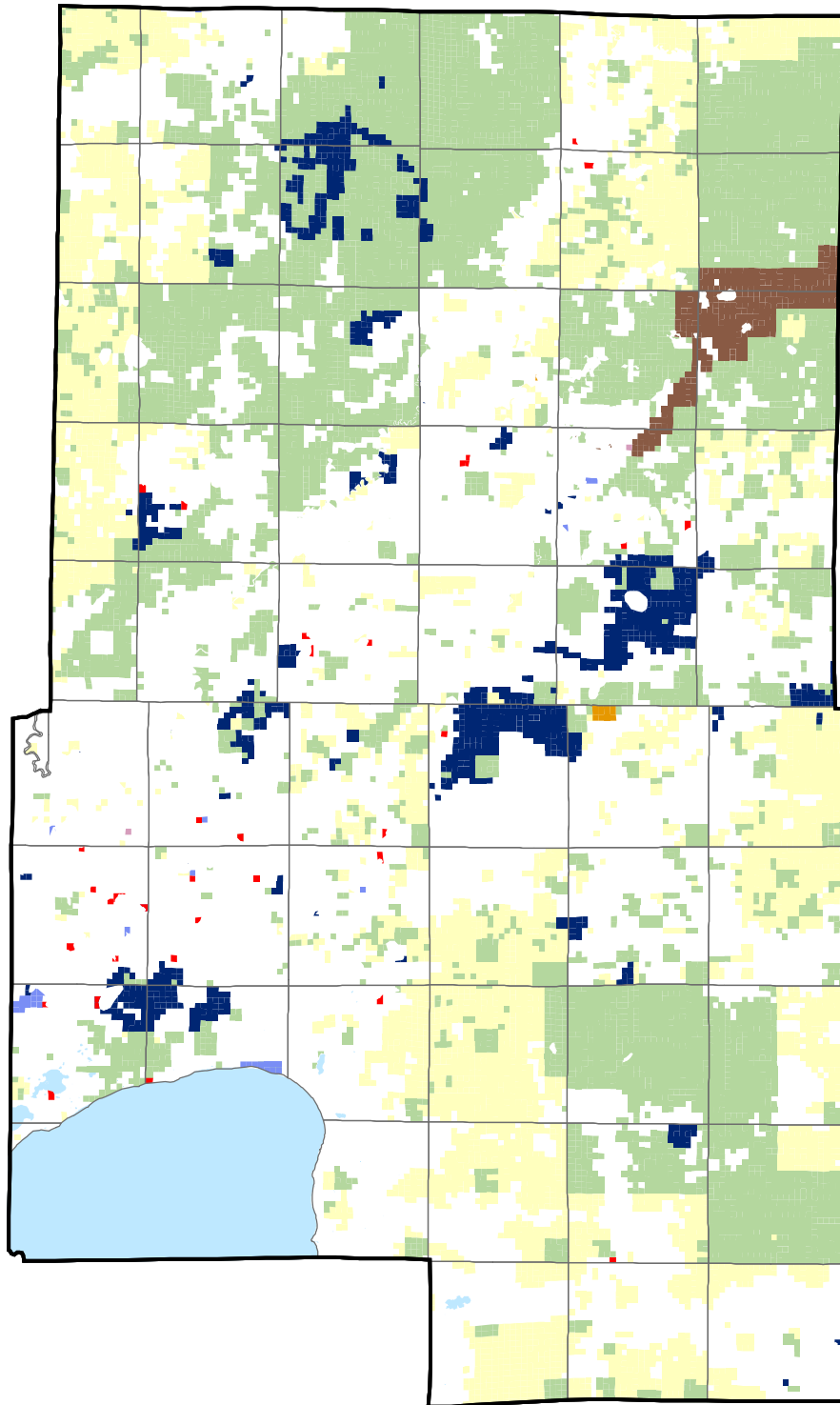
0.00 acres

<sup>1</sup> Disclaimer: Data used in this report was obtained from DNR Land Records as of 9/18/08 and may contain errors. The information within this document is subject to change.

<sup>2</sup> DNR Management Units may be wholly or partially within the County and are only indicated for Units with state owned land.

<sup>3</sup> Transaction data is derived from DNR Land Records as of 10/5/08. Completed Sales/Acquisitions/Exchanges for Fiscal Year 2008 are those completed between 7/1/07 to 6/30/08.

# STATE LANDS ADMINISTERED BY DNR AND THE COUNTY AITKIN COUNTY, MINNESOTA

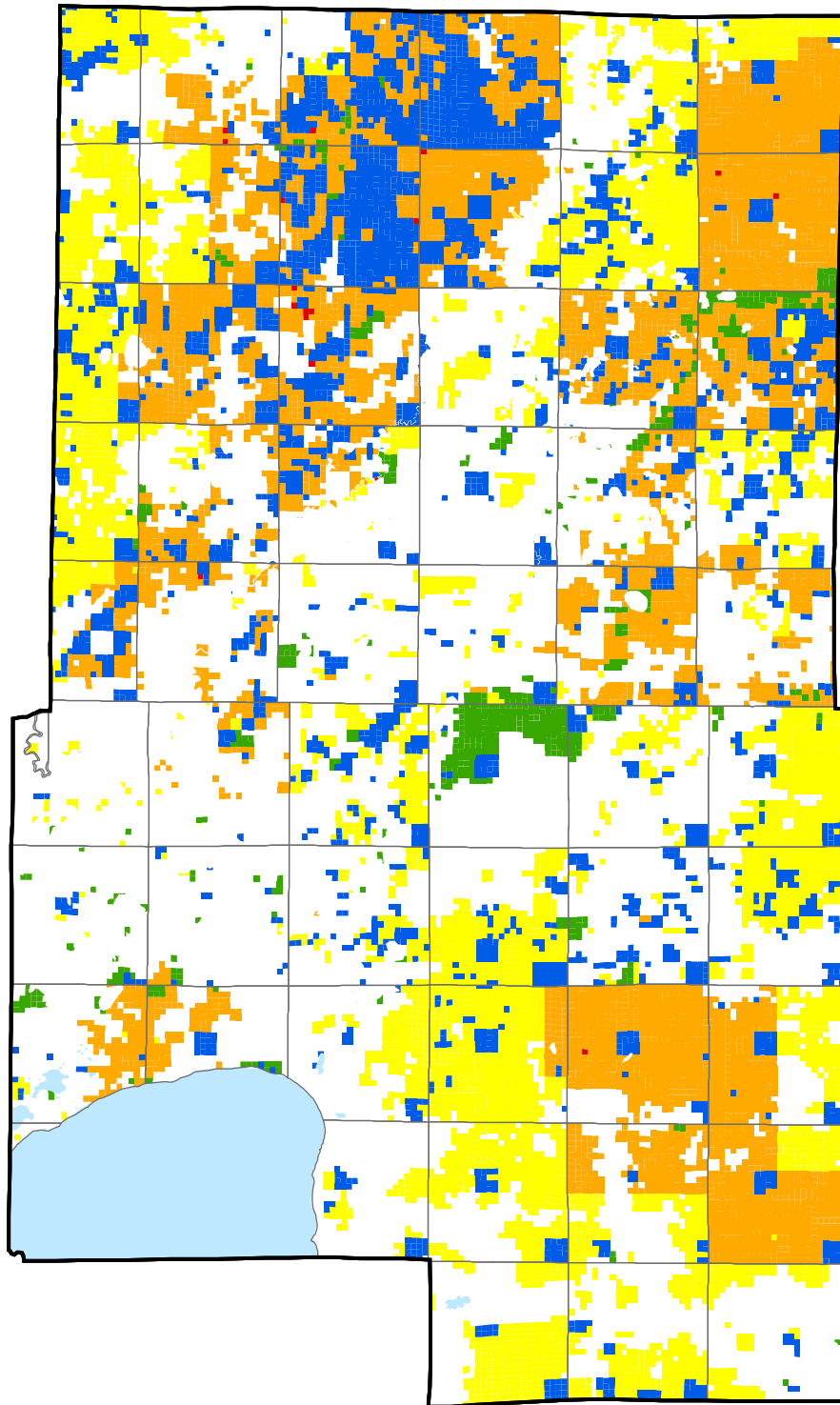


## State Lands by Administrator\*

- |  |   |  |
|--|---|--|
|  Ecological Resources |  Fisheries |  Wildlife |
|  Federal Lease Lands  |  Other DNR |  Forestry |
|  Trails and Waterways |  Parks     |  County   |




\*State lands from the DNR Land Records, October 2008.  
The lands are mapped to the forty/government lot of the public land survey, so some of the lands may be less than the entire forty or government lot.

# STATE LANDS ADMINISTERED BY DNR AND THE COUNTY AITKIN COUNTY, MINNESOTA



## State Lands by Land Type\*

\*State lands from the DNR Land Records, October 2008.  
The lands are mapped to the forty/government lot of the public land survey, so some of the lands may be less than the entire forty or government lot.

- |   |                           |   |                     |
|---|---------------------------|---|---------------------|
|  | Trust Lands               |  | Tax Forfeited Lands |
|  | Acquired Lands            |  | Volstead Lands      |
|  | Consolidated Conservation |  | Federal Lease Lands |